



**GE INDUSTRIAL MOTORS**  
a **WOLONG** company

# Product Information Packet

November 22, 2019

Data shown is for the current revision model #. Ensure your nameplate model # matches.

<b>Model Number:</b>	5KS447ZWL208
<b>Catalog Number:</b>	<b>W8405</b>
<b>Instruction Manual:</b>	GEI-M1053
<b>Connection Diagram:</b>	GEM2034E-FIG8
<b>Outline Drawing:</b>	358B6609AA

## Accessory Connection Diagrams

<b>Bearing Thermocouple:</b>	None	<b>Heater:</b>	None
<b>RTD:</b>	None	<b>Thermistor:</b>	None
<b>Thermostat:</b>	None	<b>Winding Thermocouple:</b>	None
<b>Bearing RTD:</b>	None		

## Table of Contents

Specification	01
Performance Characteristics	02
Outline Drawing	03
Connection Drawing(s)	04

Marks:

<b>MODEL NUMBER:</b>	5KS447ZWL208	<b>Estimated Weight:</b>	2651 Lbs
<b>Outline Drawing:</b>	358B6609AA	<b>Time Rating:</b>	CONT
<b>Connection Diagram:</b>	GEM2034E-FIG8	<b>Enclosure:</b>	TEFC
<b>Instruction Book:</b>	GEI-M1053	<b>Encl Construction:</b>	Energy Saver
<b>Design Code:</b>	NA	<b>Ambient Max(°C):</b>	40
<b>Type:</b>	KS	<b>Alt Ambient Max(°C):</b>	55
<b>Frame:</b>	447T	<b>Insulation Class:</b>	F
<b>Phases:</b>	3	<b>NEMA Design:</b>	B
<b>Poles:</b>	4	<b>Nominal Efficiency:</b>	96.2 %
<b>Output Power:</b>	200HP 150kW	<b>Guaranteed Efficiency:</b>	95.4 %
<b>RPM:</b>	1786	<b>3/4 Load Efficiency:</b>	96.2 %
<b>Voltage:</b>	460	<b>KVA Code:</b>	G
<b>Hertz:</b>	60	<b>Max KVAR:</b>	45.2
<b>Amps - FL:</b>	230.2	<b>Power Factor:</b>	85.4 %
<b>Service Factor:</b>	1.15	<b>Bearing - DE:</b>	NU318
<b>Alt Service Factor:</b>	1.0	<b>Bearing - ODE:</b>	6314-C3

Enclosure is Totally Enclosed Fan-Cooled

---

Stamped Nameplate Notes:Additional Information:

ROTATION:CCW VIEWED FROM ODE  
 CLASS /GAS GROUP: Div. 2, CL I GR A, B, C and D, CLASS II GR F and G  
 CBOX SIZE:1280 CU INCH  
 INVERTER DUTY PER NEMA MG1 PART 31  
 INVERTER RATED PWM 10:1 VARIABLE TORQUE, 5:1 CONSTANT TORQUE, 1.0 SF  
 INVERTER RATED PWM 1.5:1 CONSTANT POWER ,1.0 SF.



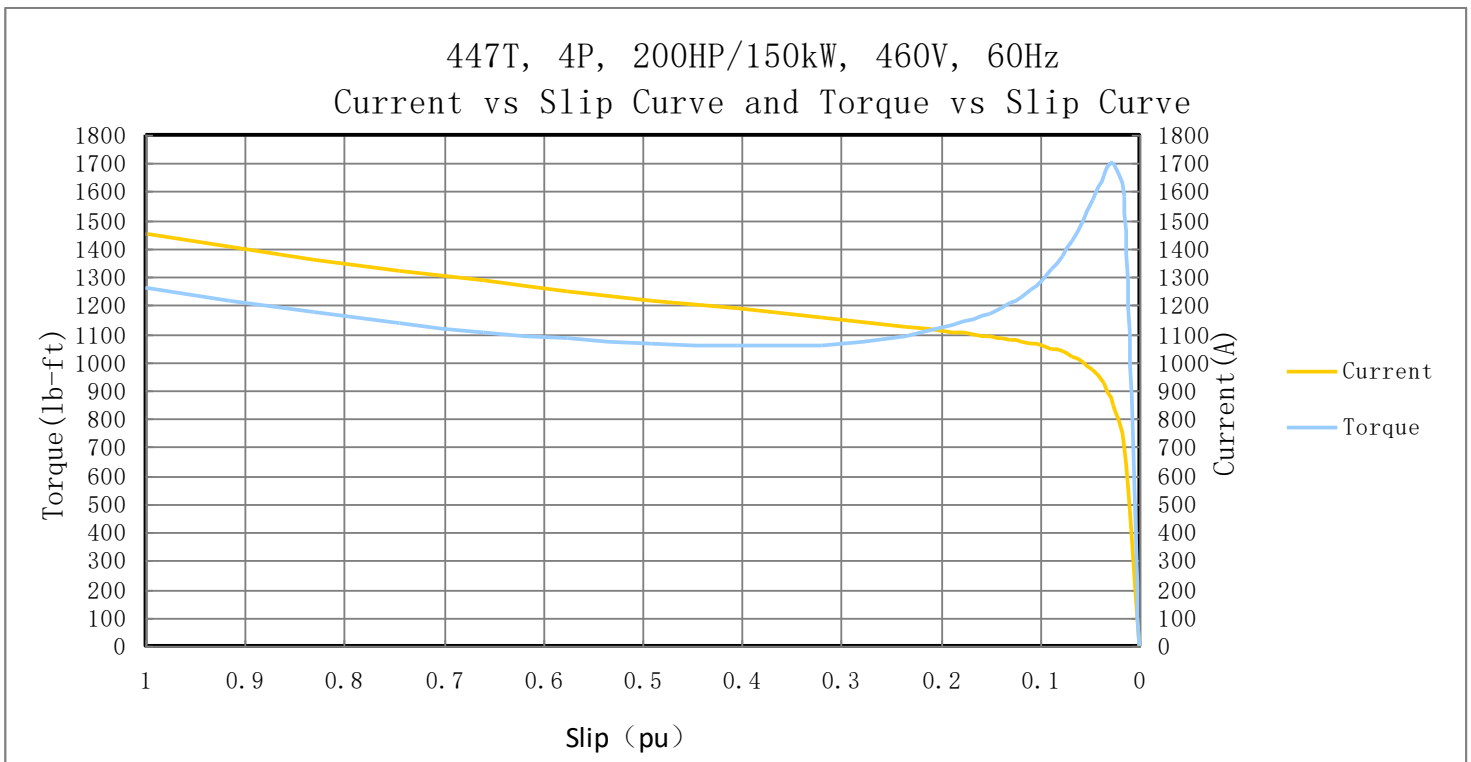
**Performance Characteristic:**

LOAD %	125.0	115.0	100.0	75.0	50.0	25.0	0.0
% EFF	96.31	96.41	96.20	96.20	96.36	95.03	0.00
% PF	88.13	88.51	85.4	81.72	76.25	65.97	23.34
AMPS(460V)	277.3	253.7	230.2	166.6	117.4	75.2	28.9

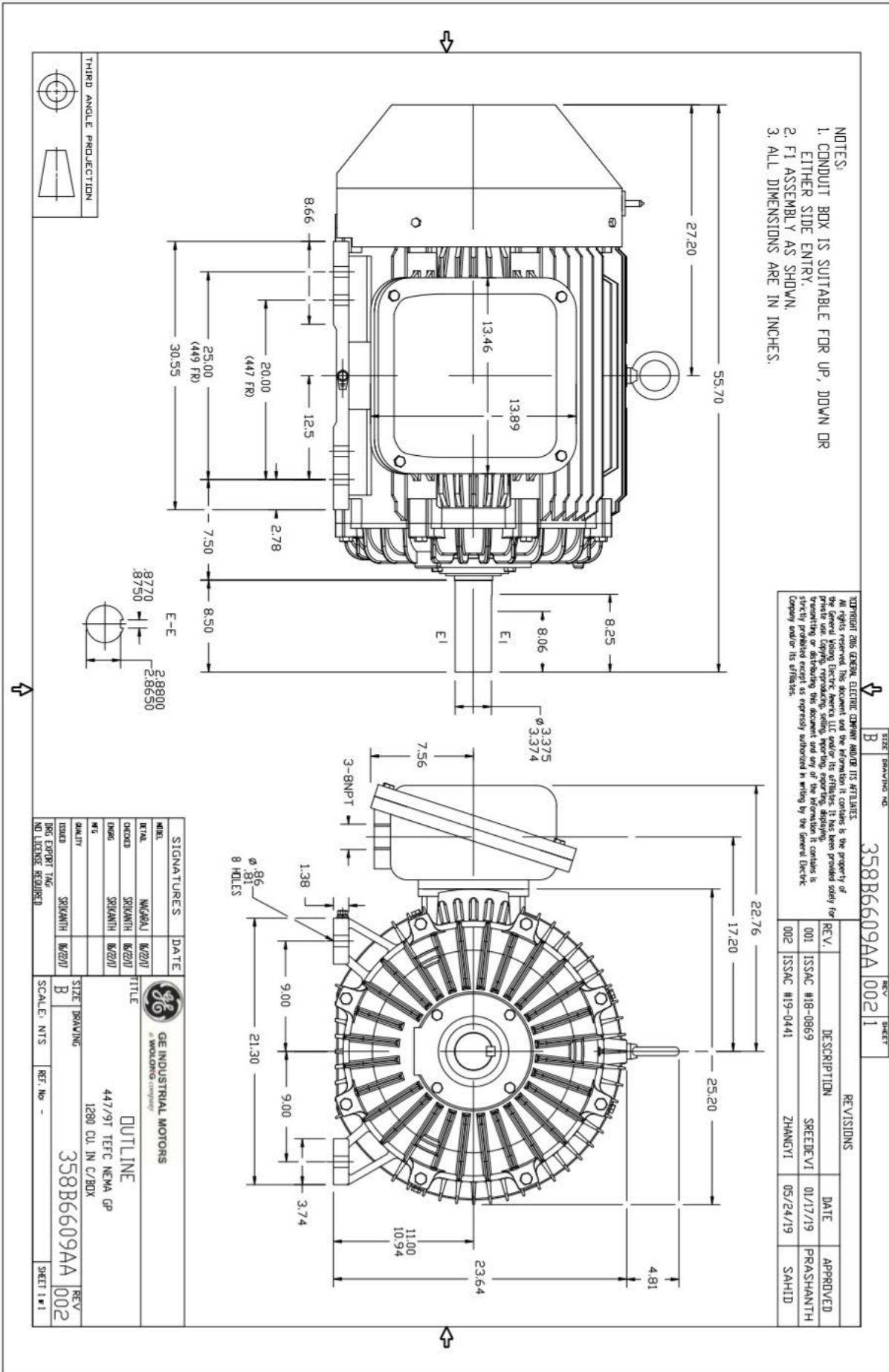
TORQUE(FL) LB-FT      590.4    TORQUE(LR)%FL      214    TORQUE(BD)%FL      288  
 AMPS(LR 460V)      1450    PF AT START      0.23%

**Other Useful Information for Application:**

Rotor Inertia: Lb-Ft <sup>2</sup> (Kg-m <sup>2</sup> ):	83.06(3.5)
Max load inertia: Lb-Ft <sup>2</sup> (Kg-m <sup>2</sup> ):	831 (35.02)
Load Type:	Square Torque/Speed Characteristic
Voltage:	100%
Number of starts per hour:	2 Cold or 1 Hot
Acceleration Time with maximum inertia (sec):	7.2
Safe stall time (sec): Cold/Hot	90/50



Marks:



Marks:

**Connection Diagram**  
**GEM2034E-FIG8**

